



F1 Series

USB Driver Installation

Guide_Windows

V1.2

Disclaimer

Any action you take in the course of using this document is at your own risk, and Fibocom shall not be liable for any damages or losses under any circumstances. Due to product version upgrade or other reasons, Fibocom reserves the right to modify any information in this document at any time without prior notice and any responsibility. Unless otherwise agreed, all statements, information and suggestions in this document do not constitute any express or implied guarantee.

This document may include the third-party information covering products, services, software, data, and so on. Fibocom does not control and assumes no responsibility for the third-party content, including but not limited to the accuracy, compatibility, reliability, availability, legitimacy, appropriateness, performance, non-infringement, and status update, unless otherwise specified in this document. Fibocom does not provide any guarantee or authorization for the third-party content mentioned or referenced in this document. If you need a third-party license, obtain it in an authorized or legal way, unless otherwise specified in this document.

Copyright Notice

Copyright © 2024 Fibocom Wireless Inc. All rights reserved.

Unless specially authorized by Fibocom, the recipient of the documents shall keep the documents and information received confidential, and shall not use them for any purpose other than the implementation and development of this project. Without the written permission of Fibocom, no unit or individual shall extract or copy part or all of the contents of this document without authorization, or transmit them in any form. Fibocom has the right to investigate legal liabilities for any offense and tort in connection with violation of confidentiality obligations, or unauthorized use or malicious use of the said documents and information in other illegal forms.

Trademark Statement

 The trademark is registered and owned by Fibocom Wireless Inc.

Other trademarks, product names, service names and company names appearing in this document are owned by their respective owners.

Contact Information

Website: <https://www.fibocom.com>

Address: 10/F-14/F, Block A, Building 6, Shenzhen International Innovation Valley, Dashi First Road, Xili Community, Xili Subdistrict, Nanshan District, Shenzhen

Tel: 0755-26733555

Contents

Applicable Model..... 2

Change History..... 3

1 Overview 4

 1.1 Overview.....4

 1.2 Purpose4

2 USB Driver Installation Package Driver Instructions 5

 2.1 USBInstallation Package Description.....5

3 USB Driver Installation Process Instructions 6

 3.1 Installation Procedure.....6

4 Common Problems and Solutions 11

 4.1 Port Cannot Be Loaded Normally and the Display Situation 11

 4.1.1 Checking Hardware ID Information 11

 4.1.2 Eliminating Interference from Other Data Monitoring Software 13

 4.1.3 Installing the Driver Manually..... 13

Applicable Model

No.	Applicable Model	Description
1	FM101 series & FG101 series	SDX12 platform
2	FM160 series & FG160 series	SDX62 platform
3	FM170 series & FG170 series	SDX65 platform
4	FM180 series & FG180 series	SDX72 platform
5	FM190 series & FG190 series	SDX75 platform
6	FM131 series & FG131 series	SDX35 platform
7	FM132 series & FG132 series	SDX35 platform

Change History

V1.2 (2024-4-11)	Added compatibility for product models FM131,FG131,FM132 and FG132
V1.1 (2024-3-13)	Added compatibility for product models FG190 and FM190.
V1.0 (2023-4-20)	Initial version

1 Overview

1.1 Overview

This document is mainly composed of 4 key chapters. A brief overview of each chapter follows:

Chapter 1 mainly describes the purpose of writing this document and gives a brief overview of the document.

Chapter 2 mainly focuses on the confirmation of applicable platforms, modules and version information of the USB driver installation package. Chapter 3 mainly describes how the user uses the USB driver installation package to install the driver.

Chapter 4 mainly provides solutions to common problems for users.

It is worth noting that chapters 2, 3, and 4 are the most important parts of this document. It is recommended that users actually operate and use it multiple times to deepen their understanding and use of the installation package.

1.2 Purpose

The main purpose of this document is to provide guidance for customers, FAE and internal R&D personnel of the company, so that they can understand, be familiar with and operate the USB driver installation package.

2 USB Driver Installation Package Driver Instructions

2.1 USBInstallation Package Description

1. The USB driver installation package is suitable for Qualcomm platform SDX12, SDX24, SDX35,SDX55, SDX62 and other chip modules.
2. Installation package name: FbUSBDeviceSetup.exe.
3. Driver name after installation: Fibocom Customized Driver Package.
4. Installation package version information: View the version information about the installed driver installation package in Programs and Functions on the system control panel. As shown in the following picture.

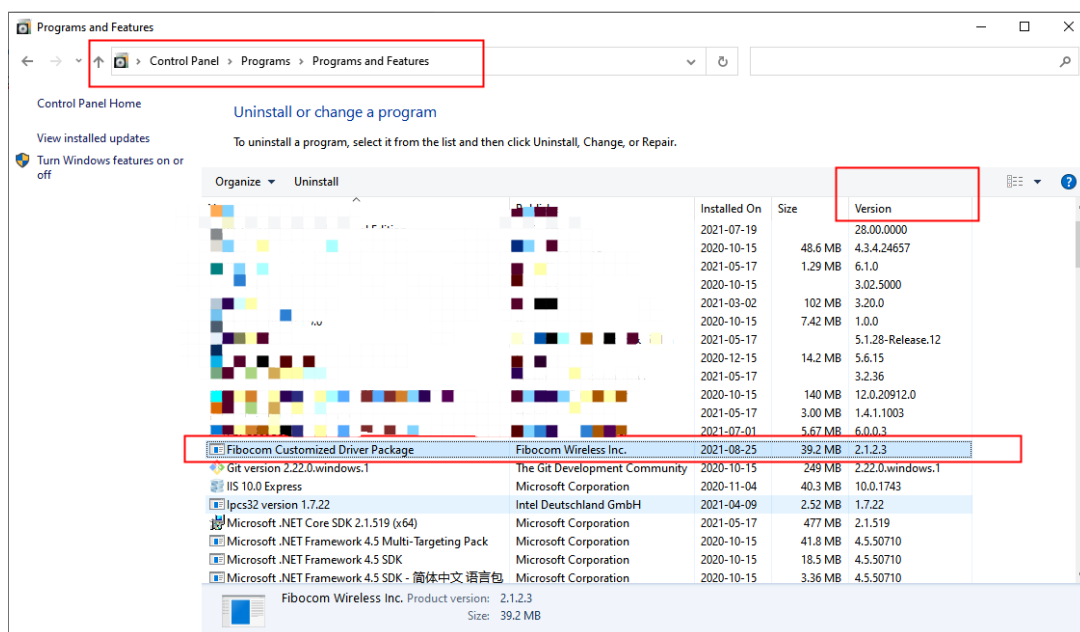


Figure 1. Package information

3 USB Driver Installation Process Instructions

3.1 Installation Procedure

1. Confirm whether the USB driver installation package has been installed in the current system environment. If it is not the first installation, please manually uninstall the old version when installing the new version of the USB driver installation package. Normally, users can use the "Control Panel" → "program" → Find the program named Fibocom Customized Driver Package in "Programs and Features", select it and right-click it, and select "Uninstall" in the pop-up prompt box to perform the uninstallation operation on the old version of the USB driver installation package. As shown below.

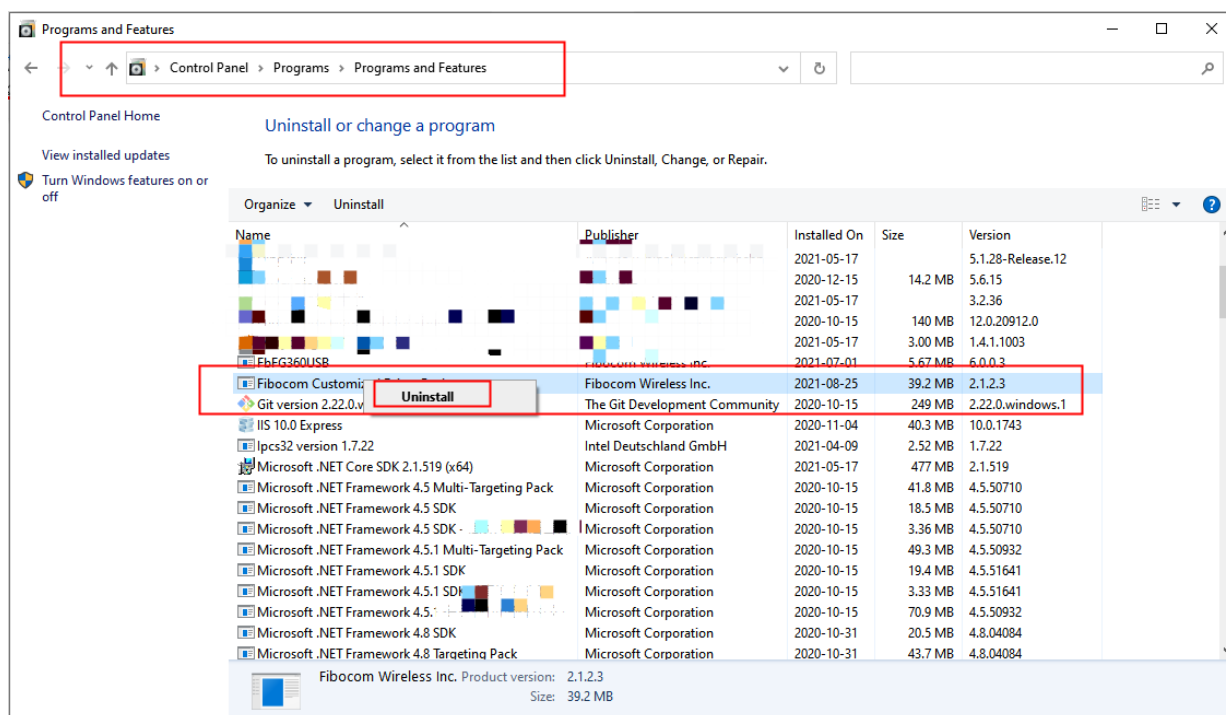


Figure 2. Unloading operation

2. When installing for the first time, users can double-click to run FbUSBDeviceSetup.exe to execute the installation. During the installation process, the installation wizard interface as shown in the figure below will pop up to enter the installation wizard step, and the user can click the "Next" button to perform the subsequent installation steps.

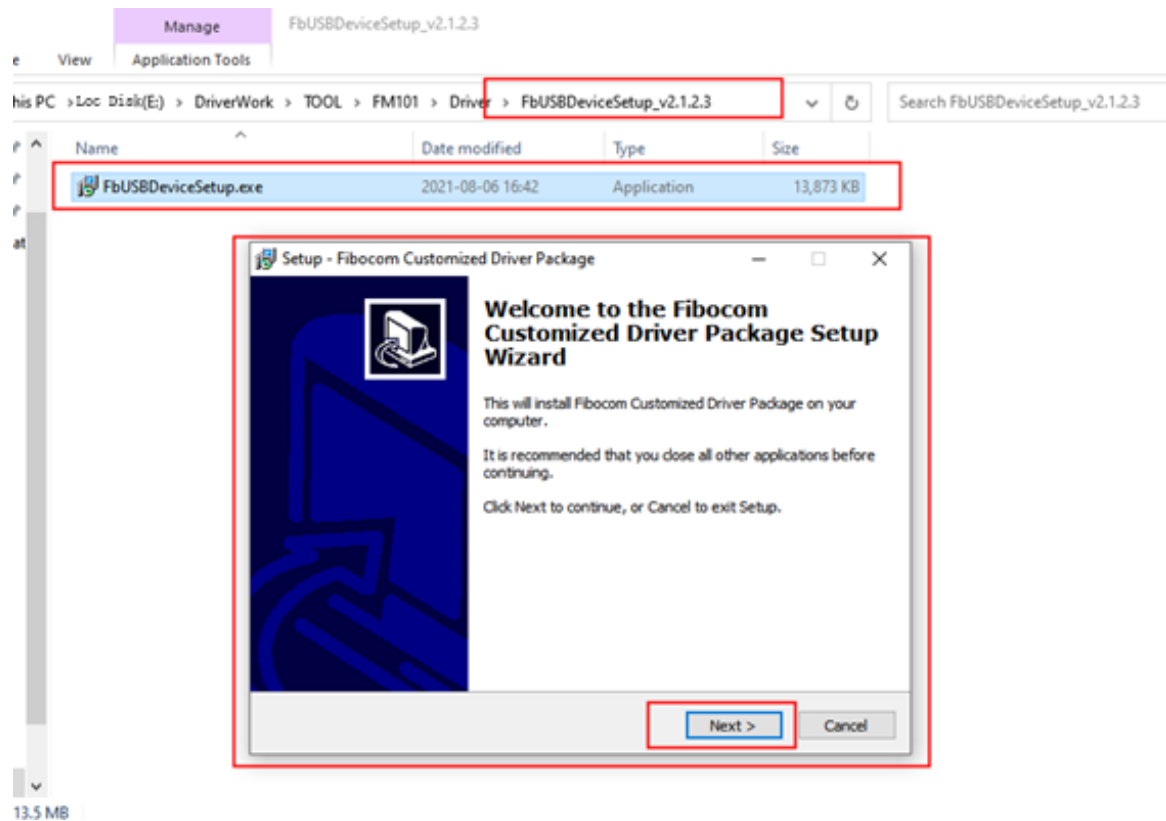


Figure 3. Installation interface

3. After clicking the "Next" button, it will enter the USB driver installation and file copy interface. During this process, the installation process will be presented to the user in the form of a progress bar, so that the user can clearly view the current installation progress. As shown below.

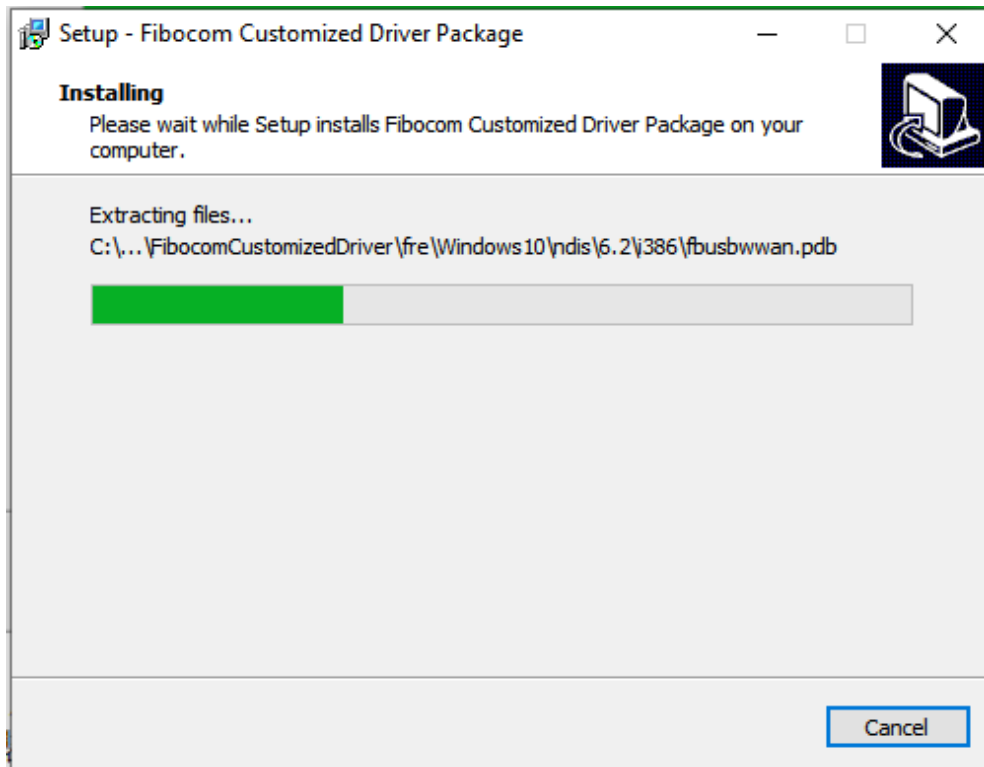


Figure 4. Being installed

4. After the installation is completed, the wizard interface will jump to the installation completion prompt, and the user can click the "Finish" button to complete the USB driver installation.

Package installation process. As shown below.

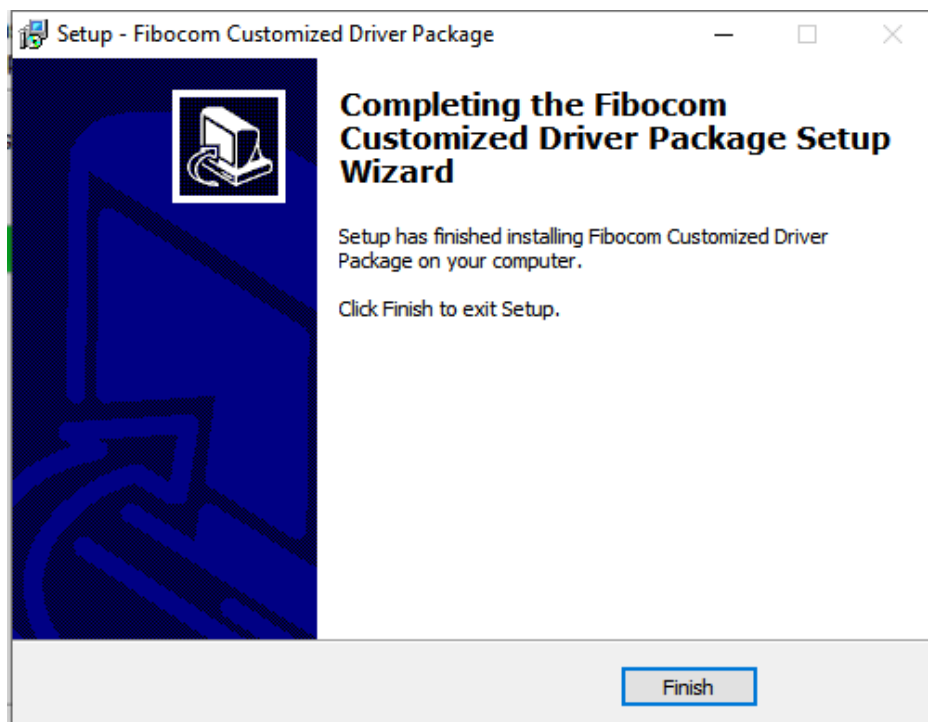


Figure 5. Installation complete

5. Connect the module with USB connection, and wait for the module device port to be generated and displayed in the device manager. As shown below.

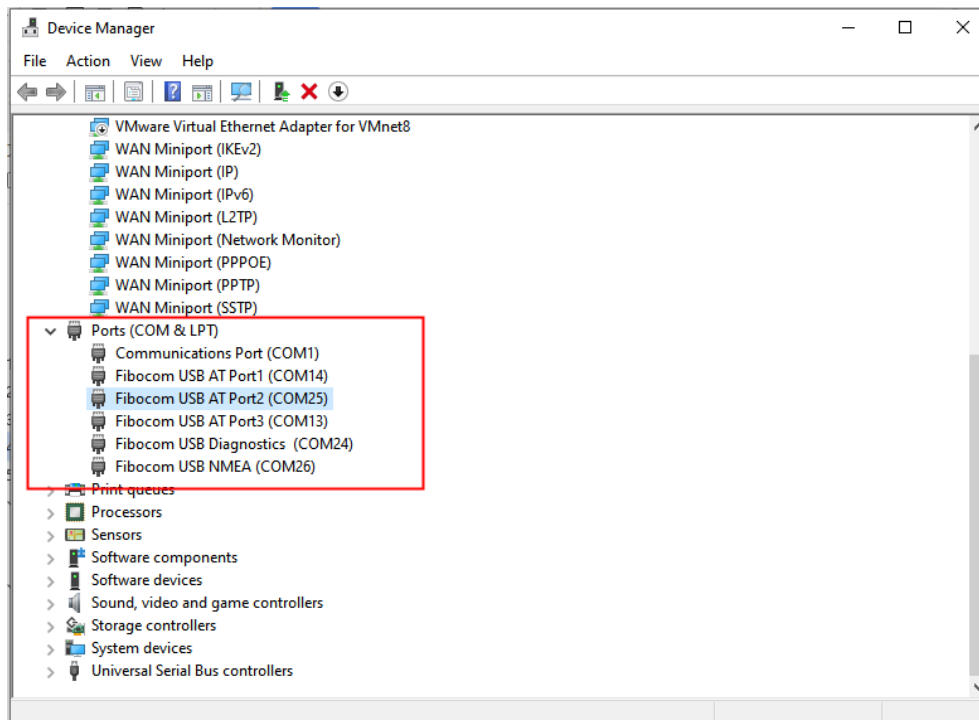


Figure 6. Device port

6. Use the "Devices by connection" method to view the entire port information of the currently connected module. As shown below.

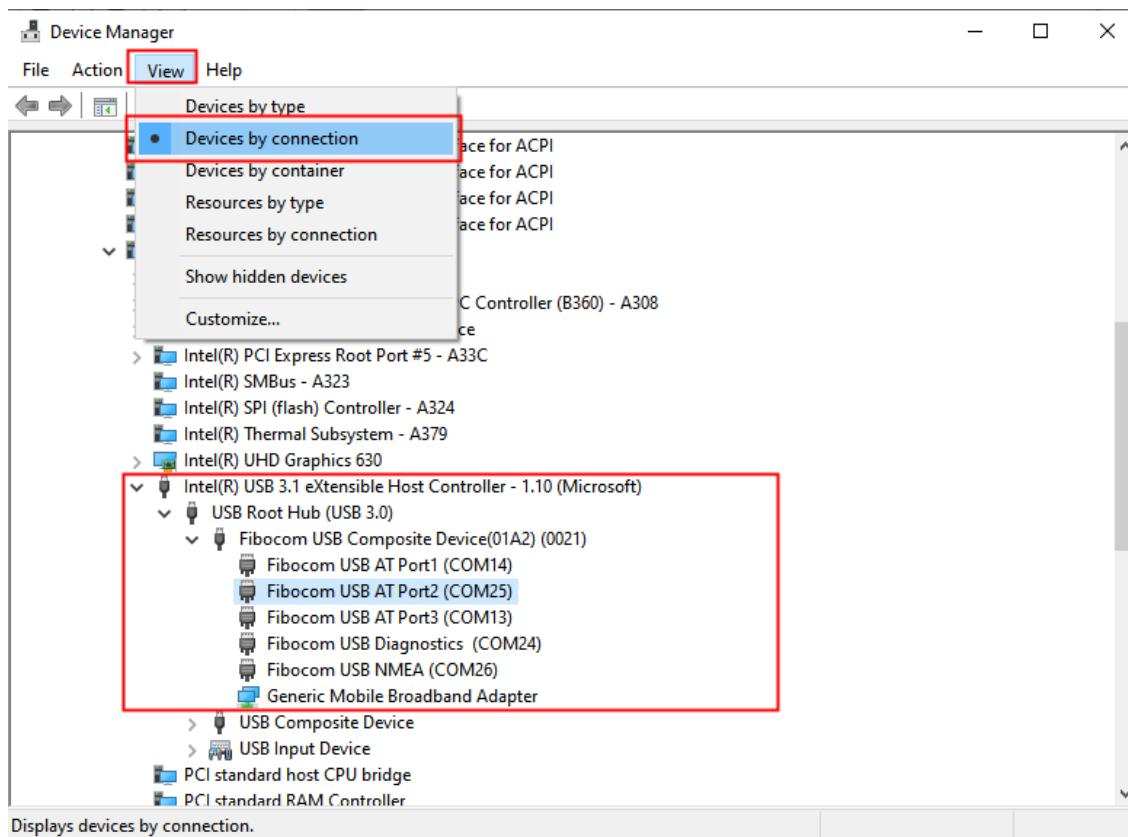


Figure 7. Viewing port information

4 Common Problems and Solutions

4.1 Port Cannot Be Loaded Normally and the Display Situation

4.1.1 Checking Hardware ID Information

1. Check to see if the Hardware ID information matches. Confirm that the Hardware ID must be the hardware VID/PID specified by Fibocom. Take the subnode "Fibocom USB Composite Device(0104)(0006)" as an example, right-click "USB Composite Device" in the device manager and select "Properties". As shown below.

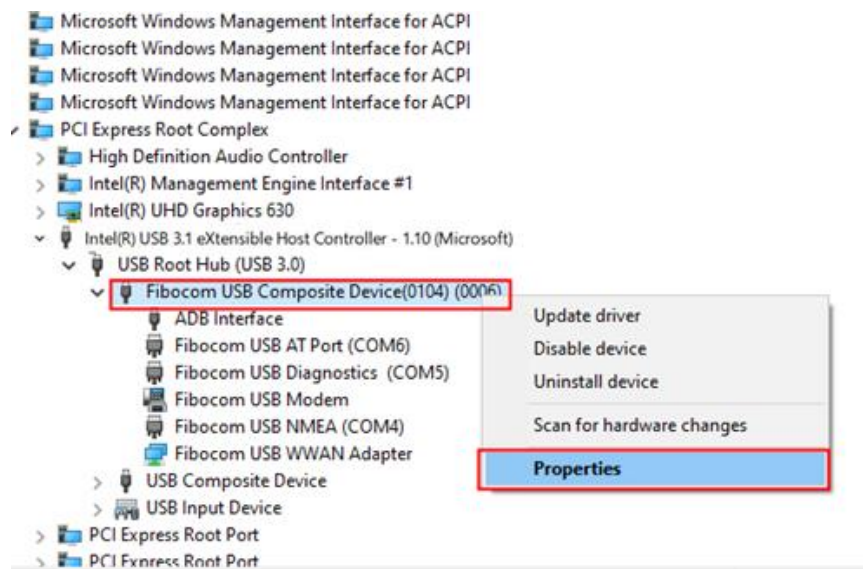


Figure 8. Viewing port properties

2. Select the "Details" tab on the pop-up property panel interface, and then select "Hardware Ids", you can view the Hardware ID of the current node, and the user can right-click to copy the Hardware ID information, as shown in the figure below.

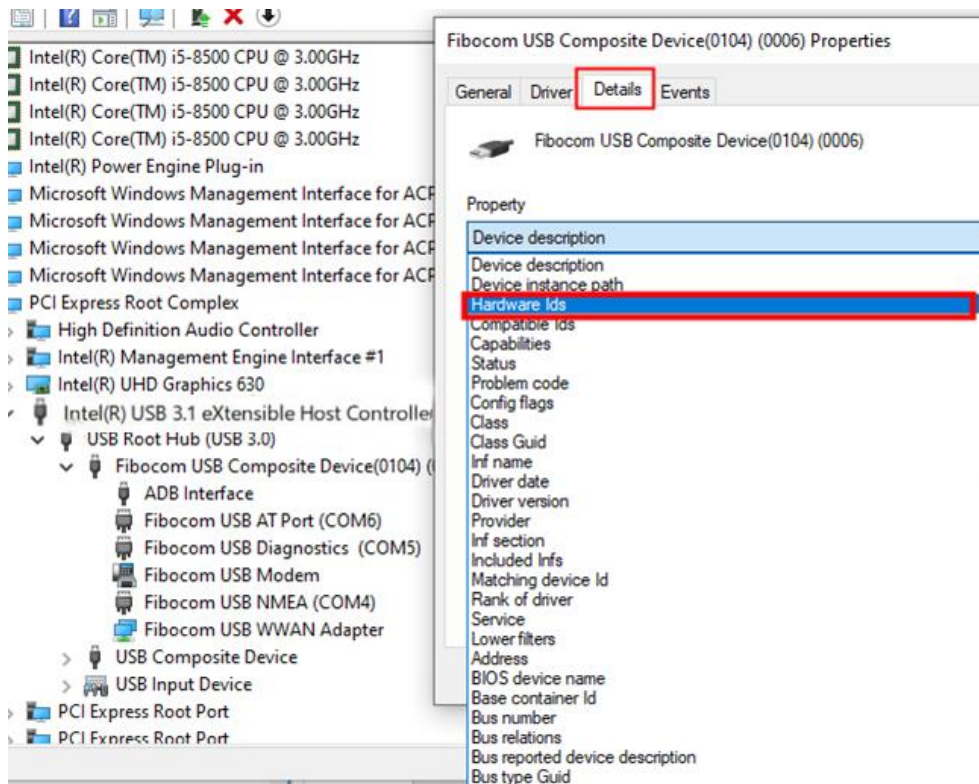


Figure 9. View details

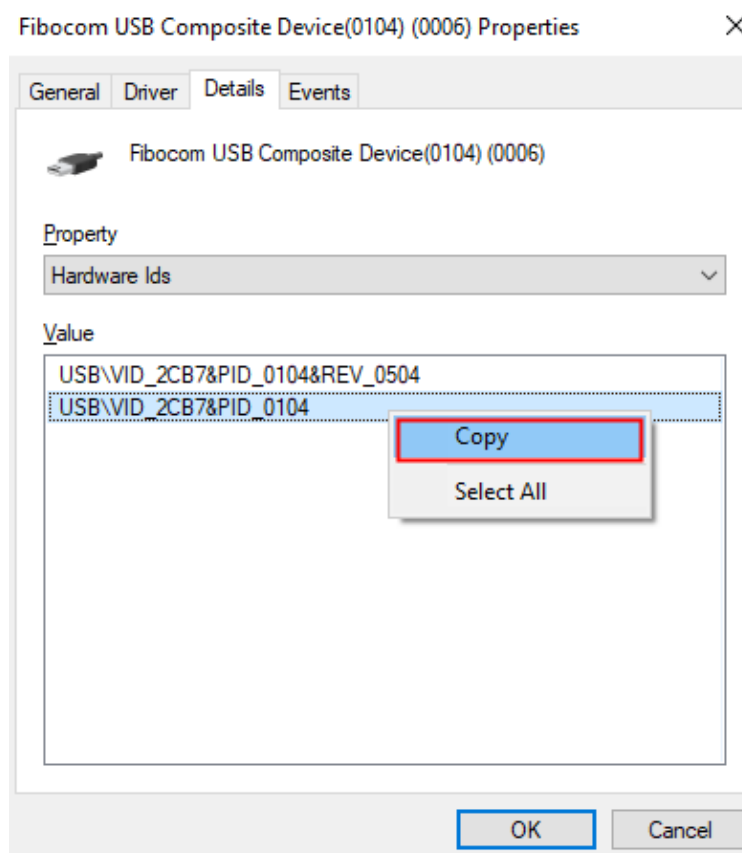


Figure 10. Replication hardware id

a. Open the installation path:

Win 7: C:\Program Files (x86)\FibocomCustomizedDriver\fre\Windows7

Win 10: C:\Program Files (x86)\FibocomCustomizedDriver\fre\Windows10

and double-click to open the folder.inf file, check whether there is a matching string in the current .inf file, if it can be found, it means that the .inf file is the driver corresponding to the port node. As shown below

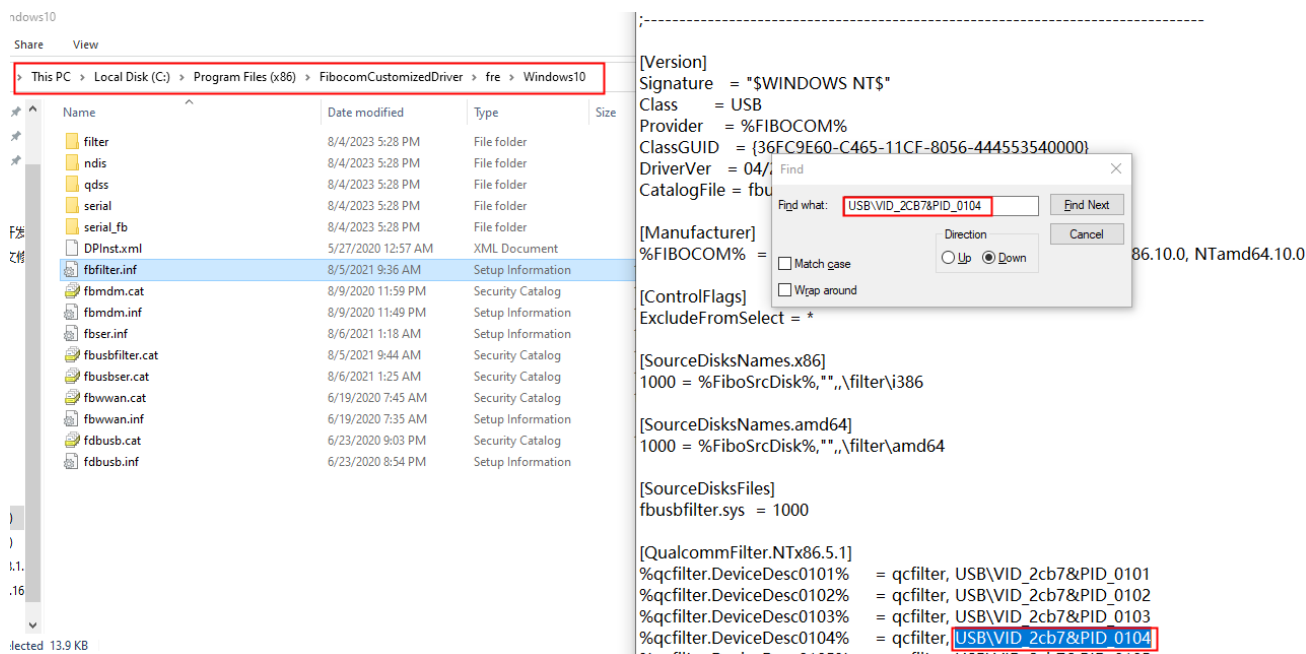


Figure 11. Viewing the corresponding driver

4.1.2 Eliminating Interference from Other Data Monitoring

Software

Check whether it is installed in the current system environment. Data monitoring software such as BusHound. If data monitoring software such as BusHound has been installed, it is recommended to uninstall it from the control panel. At present, it is known that such software will interfere with the loading of the fbfilter driver, causing all drivers to fail to load.

4.1.3 Installing the Driver Manually

If you have tried the above methods and still have not solved the problem, you can try to install the driver manually.

1. Manual installation method 1.

Applicable operating system: Win10.

Manual update (inf): Find the driver from the installation path of the installation package (C:\Program Files (x86)\FibocomCustomizedDriver\fre\Windows10), you need to install the fbfilter driver first, and then install the other four drivers (fbser, fbmdm, fbwwan) in any order, fdbusb).

Driver installation method: select the inf file of the driver -> right mouse button -> install, as shown in the figure below.

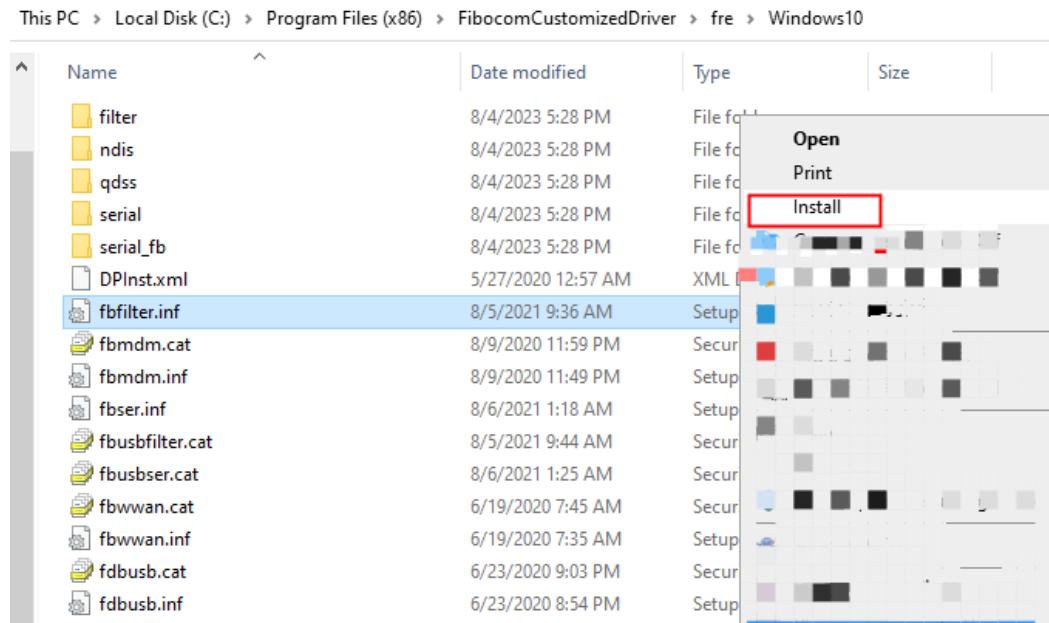


Figure 12. Manual installation

2. Manual installation method 2.

Applicable operating system: win7 and win10.

Manual mandatory installation requirements: the parent node driver needs to be installed first –fbfilter, and then install the other four drivers (fbser, fbmdm, fbwwan, fdbusb) in any order. It is worth noting that the driver must match the Hardware ID! Otherwise, there will be a problem that the wrong driver is installed on the port and thus YB! How to confirm whether the Hardware ID matches, see 4.1.1 for details.

Here we take fbfilter driver installation as an example to illustrate the detailed operation steps of manual driver installation.

- a. Select the port where the driver is not installed, and then click "Devices by connection", as shown in the figure below

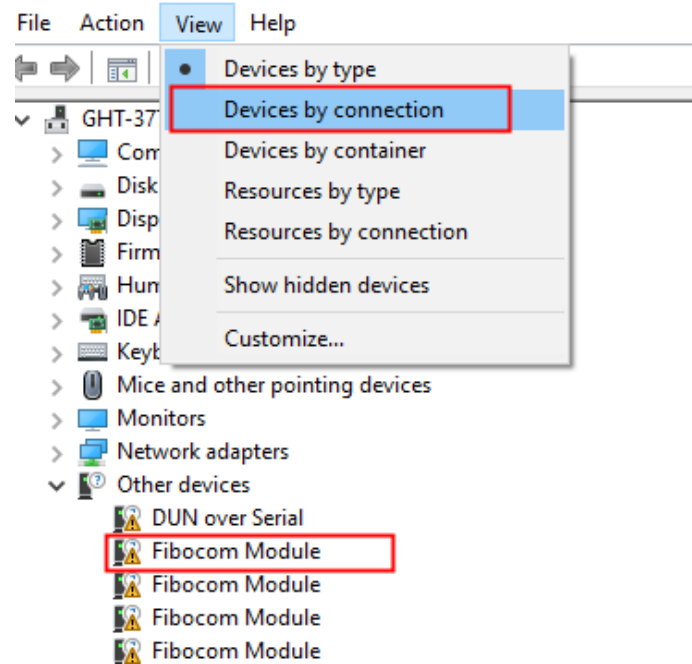


Figure 13. Device port

b. Then right-click the "USB Composite Device" port node and click "Update Driver", as shown in the figure below.

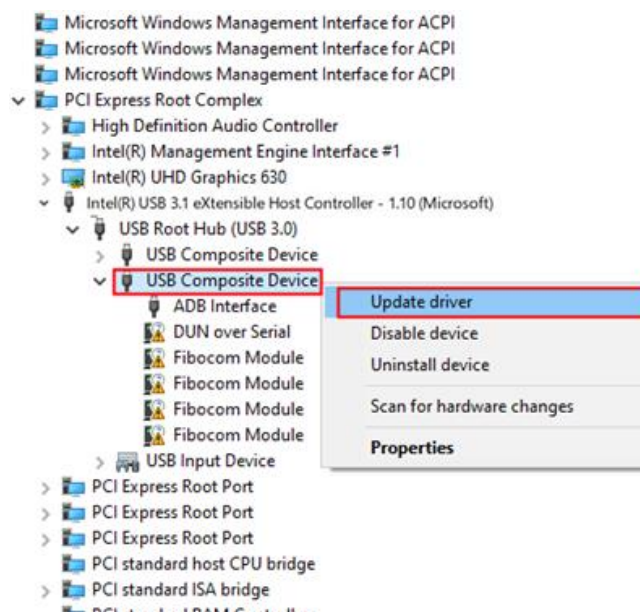


Figure 14. Update driver

c. Select Browse my computer for drivers software as shown in the image below.

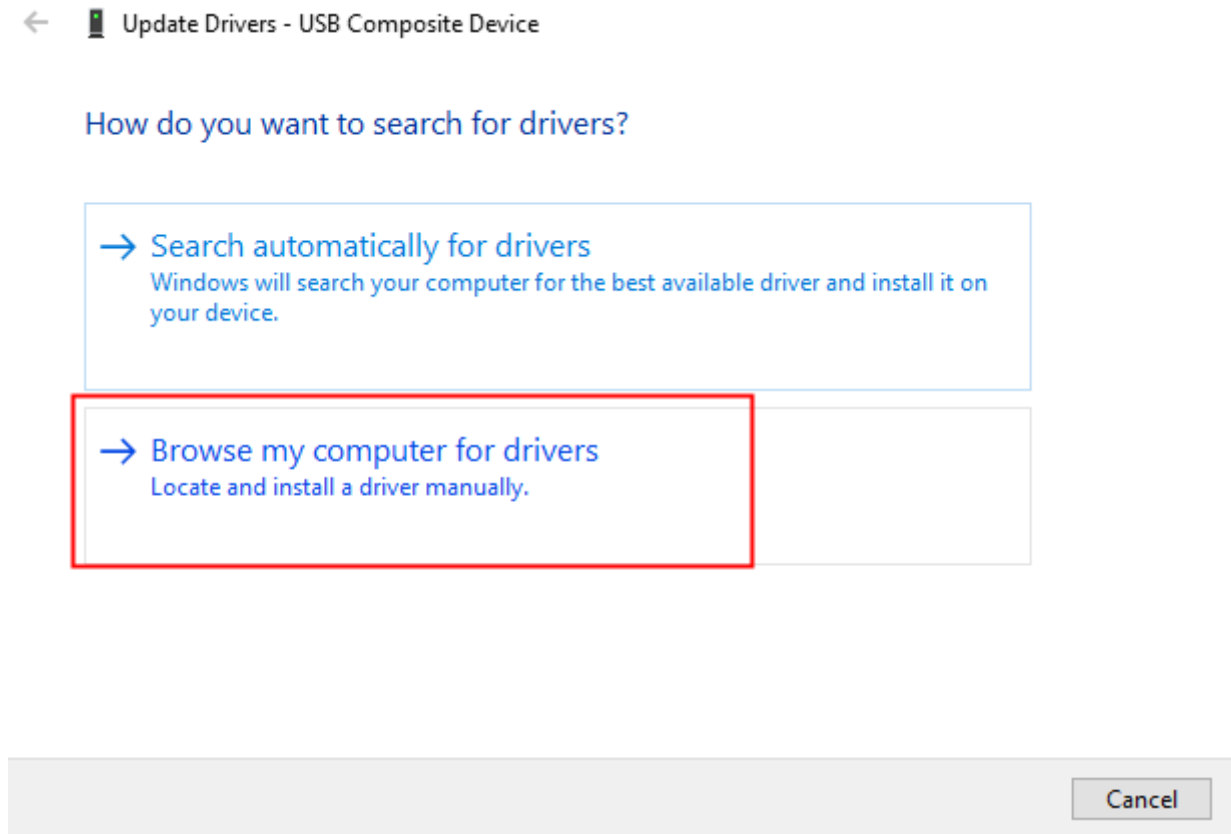


Figure 15. Find driver

d. Select "Let me pick from a list of available on my computer" as shown in the image below.

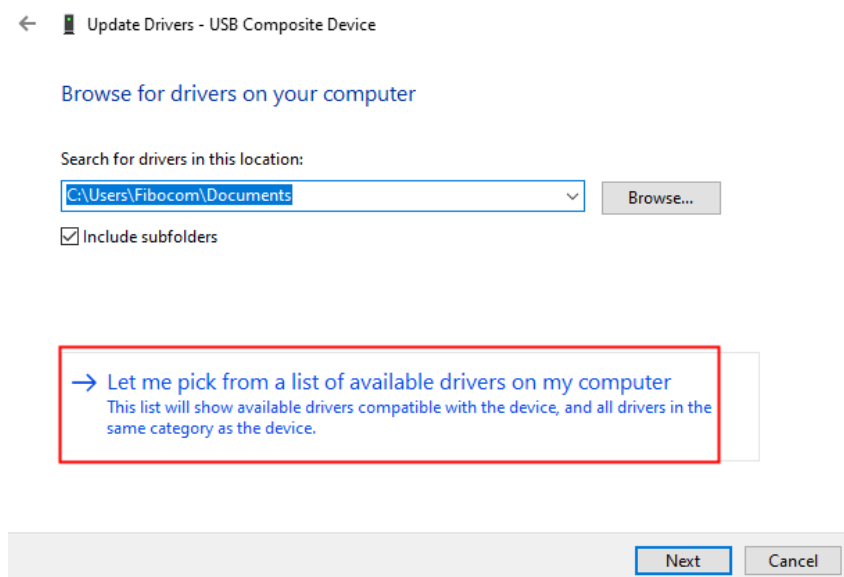


Figure 16. Manual search

e. Click "Have Disk..." as shown in the figure below.

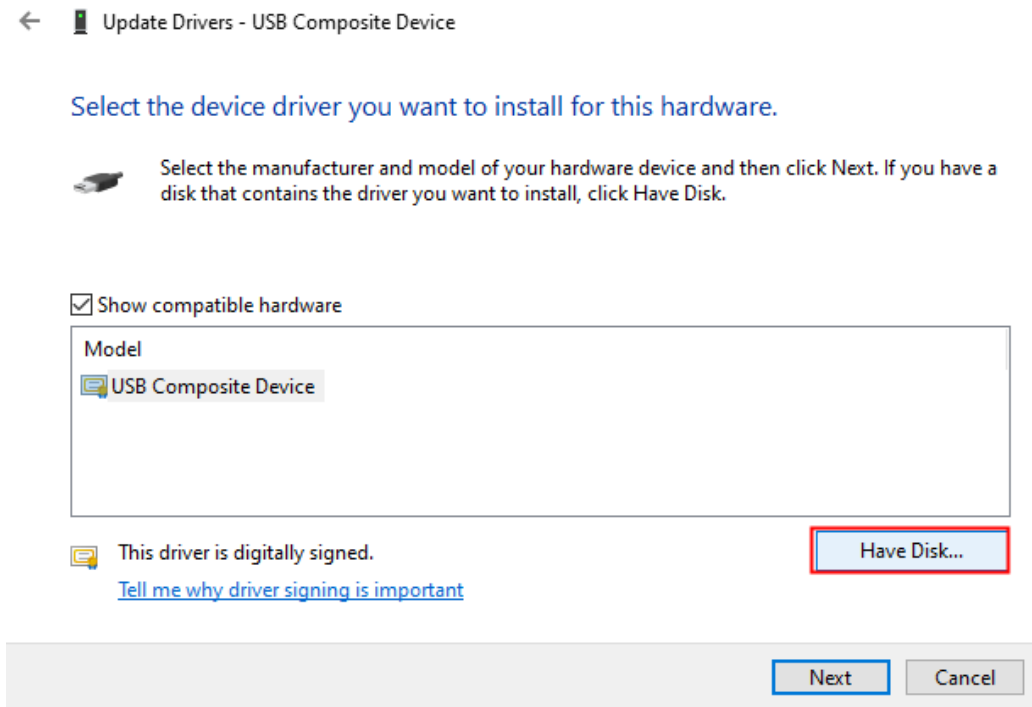


Figure 17. Install from disk

- f. Click the "Browse..." button to select the corresponding installation package driver path (Win7: C:\Program Files (x86)\FibocomCustomizedDriver\fre\Windows7 or Win10 C:\Program(x86)\FibocomCustomizedDriver\fre\Windows10).

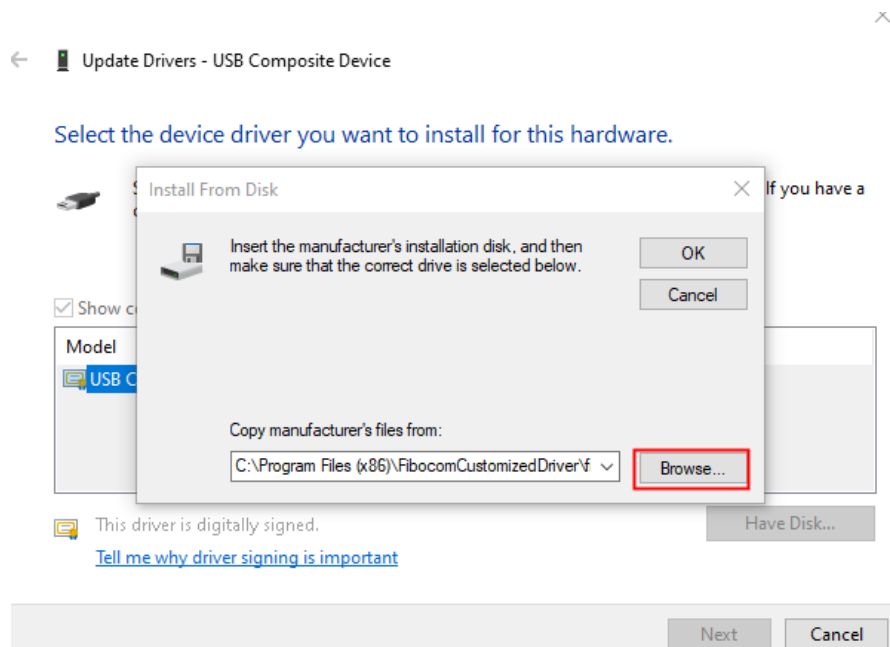


Figure 18. Selection path

- g. Select "fbfilter.inf" to install the node driver, as shown in the figure below.

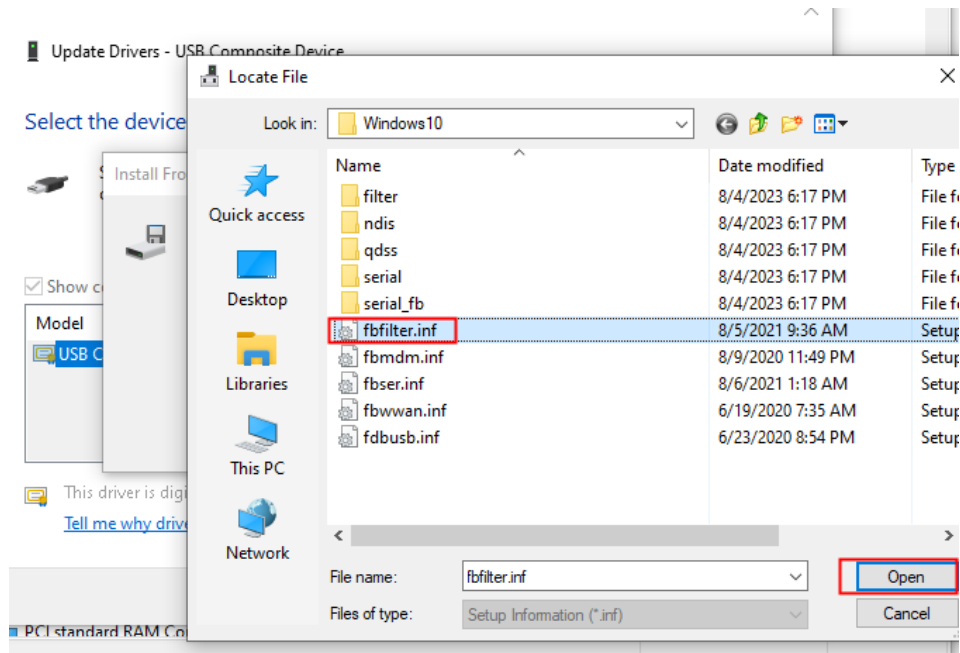


Figure 19. Select corresponding driver

h. After selecting the file, click the "OK" button, as shown in the figure below.

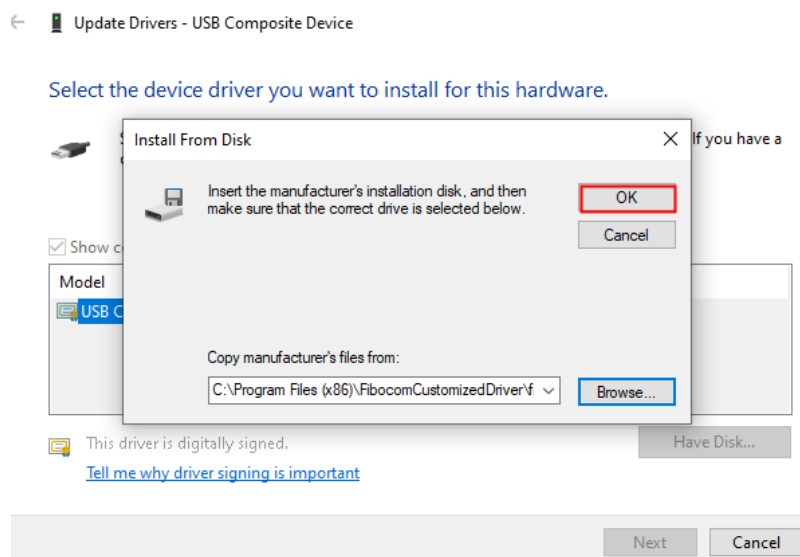


Figure 20. Selected driver

i. Click the driver in the list and click "Next" to complete the loading.

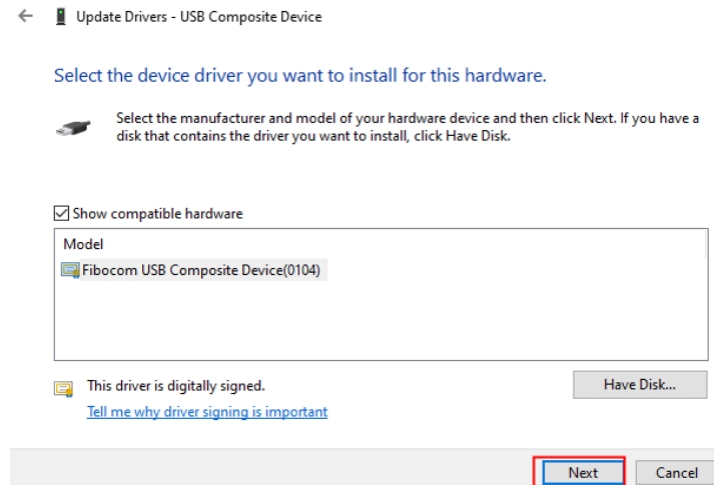


Figure 21. Confirmed installation

j. The fbfilter driver is successfully installed as shown in the figure below.



Figure 22. Successful installation

k. Other driver installation methods are similar to fbfilter driver.